

PRITCHARD& PRITCHARD

A GREENER FUTURE

Pritchard & Pritchard is a renowned company based in the UK, with expertise in the design, installation, and maintenance of green infrastructure aimed at enhancing the environmental sustainability of commercial and residential properties. Since our foundation in 2004, we have been providing innovative solutions for green roofing and living walls.



Our Services

Living Walls



Living Roofs



Podium & Roof Gardens



Our Services

Roof and Wall Maintenance



Consultation Service



Green Doctor Service



Pritchard & Pritchard Board Members
Green Roof Organization (GRO)
Associated Members with



Our Clients



Living Walls



Pritchard & Pritchard specializes in the design, installation, and maintenance of green walls, offering modular living-wall systems and natural green façades.

**Green Façade /
Climber Walls**



**Modular
Living Walls**



**Residential
Living Walls**



**Green Wall
Doctor Service**



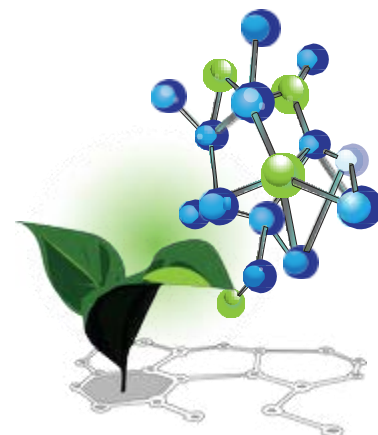
Maintenance



**What
do
we Use?**

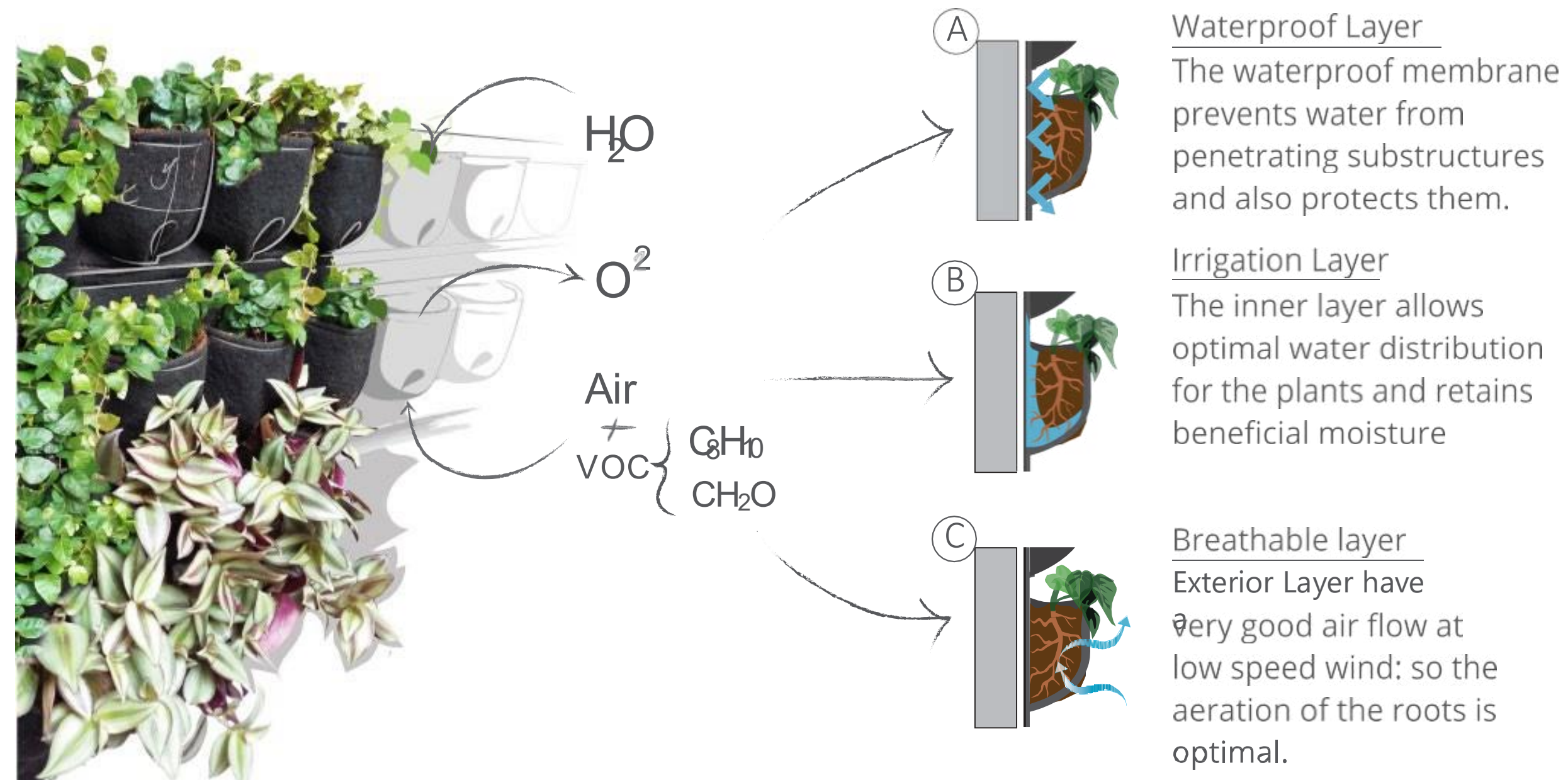


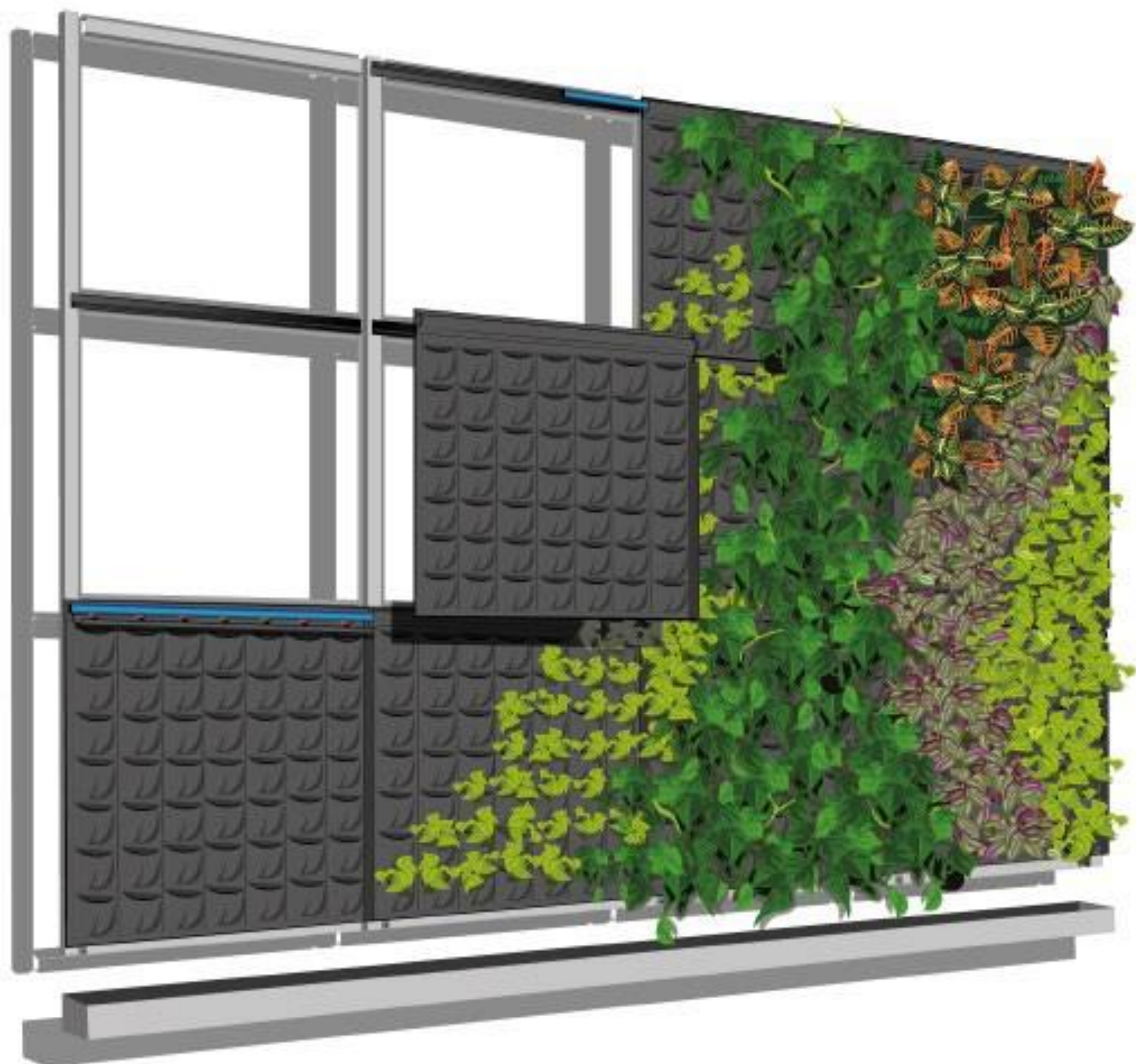
 **fyto**textile[®]



Fytotextile® Multilayer modules

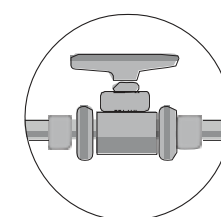
It improves the plants health, due to its high transpiration capacity in the exterior layer, and establishes an optimal balance between water, air and substrate in the buried part of the plant





 **fyto**textile[®]

Green wall elements for Fytotextile[®] system



Auxiliary engineering:
Irrigation and control system, composed by
solenoid valves by sectors, filters and cutting
valves.

The background of the slide is a photograph of a modern architectural space. On the left, there is a wall made of large, dark grey rectangular panels. To the right, a concrete wall is partially visible, with a lush green tree and some plants growing behind it. In the foreground, a wooden plank deck leads towards a planter bed filled with green grass. A semi-transparent green rounded rectangle is overlaid in the center of the image, containing the text.

FytoBooster Products

FytoBooster is a leading manufacturer and supplier of next-generation substrates for sustainable agriculture, covering the entire cultivation cycle and can be reused for additional, value-driven, sustainable applications.



Optimal Growth

will encourage faster & healthier growth of plants from start to finish.



Economical

Lower overhead costs of water and nutrients by up to 60%



Proven Sustainability

Environmentally safe, reusable and completely bio-disposable.



Comprehensive

Unmatched capillary qualities and suitable for all plant types.



Scalable

For all types of growers from your home windowsill to commercial farming.



Synthetic Organic

Compound offering an inert, sterile substrate.

A photograph of a hydroponic strawberry growing system in a greenhouse. The plants are lush green and growing in white foam containers. Some plants have small white flowers and ripe red strawberries. A yellow cable runs along the ground in the foreground. The background shows the structure of the greenhouse.

FytoCell, FytoFoam, and FytoPlugs

Why Use FytoCell?



%60 Water Retention



Root Aeration



Sustainability



Versatility



Cost-Effective

Why Use FytoFoam?



Lightweight and Easy to Handle



Water-Saving



Reduced compaction



Recyclable



Ideal for Transportation

Why Use FytoPlugs?



Healthy Root development



Time-Saving



Biodegradable



Versatile

Why Use Bioretention Soil with FytoFoam?



Increased
plant growth



Sustainable gardening that
promotes ecological balance



Water
Conservation

Living Roofs



Pritchard & Pritchard is the UK's leading expert in the design, installation, and maintenance of all types of living roofs, meeting the highest UK and European standards.

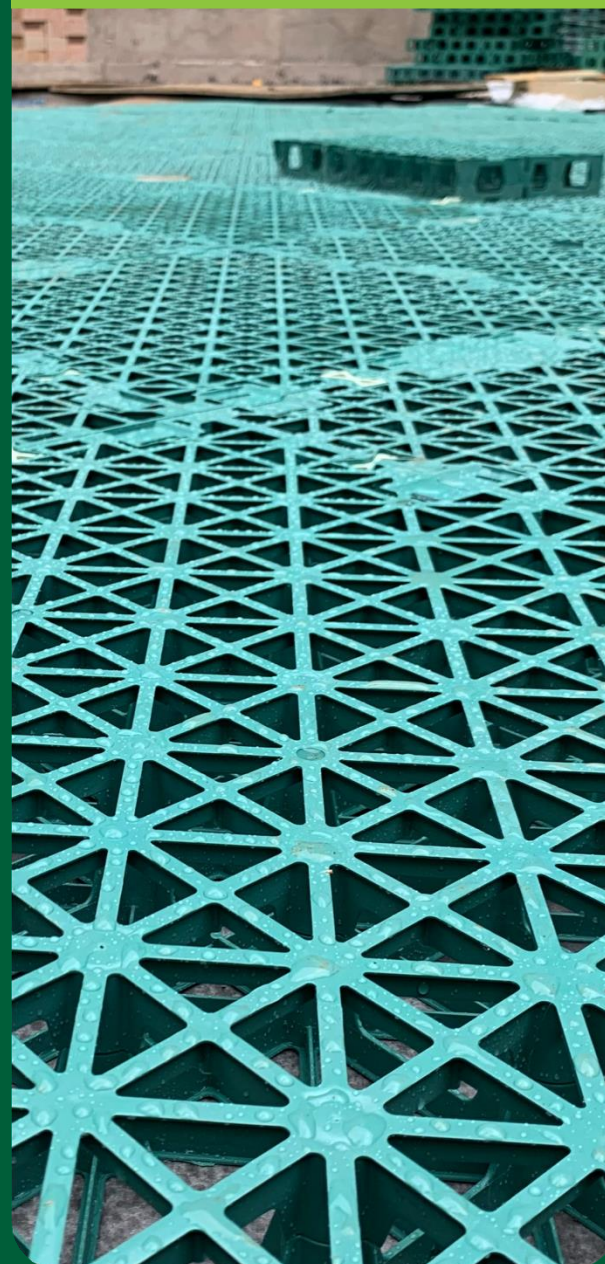
Bio Solar Roofs



Green Roofs



Blue Roofs



Brown and
Biodiverse Roofs



Diagnosis and
Renovation



Maintenance





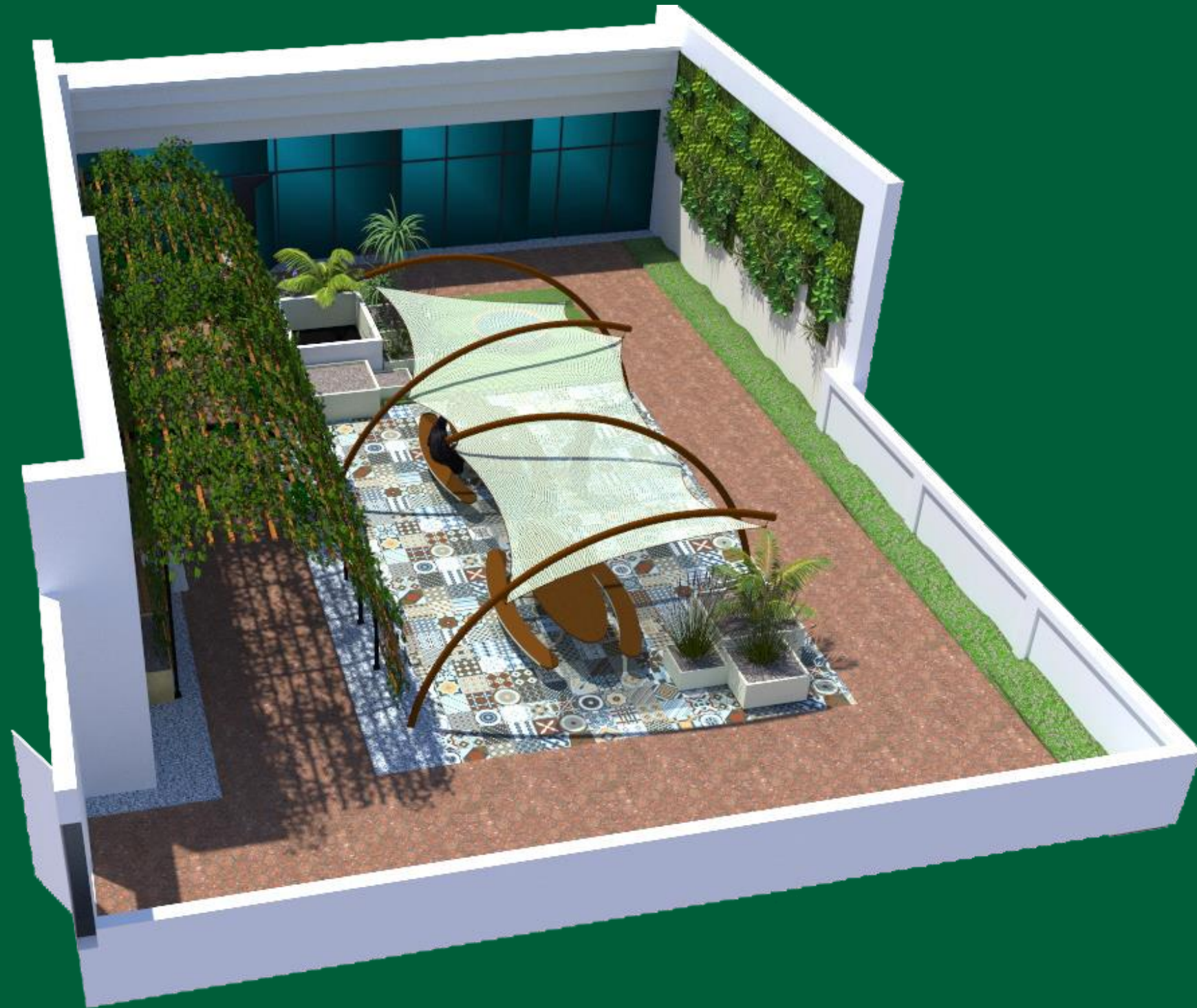
**Amenity Area Roof
Terrace VI**



**Amenity Area Roof
Terrace V2**



National Center for Vegetation Cover Development V3



Amenity Area
Roof Terrace



**Extensive Planting
Green Roof V5**

Our Projects





A new green roof in the science department at Sussex University in Brighton, Southern England



**Replacement green roof work
at Barbican Centre in the City of London**



New intensive green roof on residential development in Croydon
southeast London



**A podium at the Plough Lane project in
Wimbledon London**



**A new living wall installed
at Ocean Infinity in Southampton southern England**



**Biosolar roof at the Plough Lane project in
Wimbledon London**





PRITCHARD &
PRITCHARD

Thank You